



KUK SOOL WON™

UK Schools

Safeguarding Children Policy and Procedures



Table of Contents

1. Commitment to safeguarding	3
2. Principles	3
3. Legislation & statutory guidance.....	4
4. Definitions	4
5. Types of abuse and neglect (according to Keeping Children Safe in Education 2018)	4
6. Signs and Indicators of Abuse and Neglect.....	8
7. What to do if you have a concern or someone raises concerns with you	9
8. How to respond to a concern	10
9. Safeguarding Children Flowchart.....	12
10. Recording.....	13
11. Codes of Conduct and Ethics.....	13
12. Safer Recruiting.....	13
13. Supervision, support and training.....	14
14. Whistleblowing.....	14
15. Complaints.....	14
16. Links to other organisational procedures.....	14
17. Useful contacts	15

1. Commitment to safeguarding

At **Kuk Sool Won (UK Schools)** we are committed to safeguarding children and young people under the age of eighteen and we expect everyone who works in our organisation to share this commitment. Adults in our school/club take all welfare concerns seriously and encourage children and young people to talk to us about anything that worries them. We will always act in the best interest of the child.

2. Principles

Kuk Sool Won (UK Schools) acknowledges the duty of care to safeguard and promote the welfare of children and is committed to ensuring safeguarding practice reflects statutory responsibilities, government guidance [Working Together to Safeguard Children 2018](#) and complies with best practice requirements.

The policy recognises that the welfare and interests of children are paramount in all circumstances. It aims to ensure that regardless of age, ability or disability, gender reassignment, race, religion or belief, sex or sexual orientation, socio-economic background, all children:

- have a positive and enjoyable experience in a safe and child centred environment.
- are protected from abuse whilst participating in activity organised within **Kuk Sool Won (UK Schools)** premises or outside.

Kuk Sool Won (UK Schools) acknowledges that some children, including disabled children, very young children or those from ethnic minority communities, can be particularly vulnerable to abuse and we accept the responsibility to take reasonable and appropriate steps to ensure their welfare. As part of our safeguarding policy **Kuk Sool Won (UK Schools)** will

- promote and prioritise the safety and wellbeing of children and young people.
- ensure everyone understands their roles and responsibilities in respect of safeguarding and is provided with appropriate learning opportunities to recognise, identify and respond to signs of abuse, neglect and other safeguarding concerns relating to children and young people.
- ensure appropriate action is taken in the event of incidents/concerns of abuse and support is provided to the individual/s who raise or disclose the concern.
- ensure that confidential, detailed and accurate records of all safeguarding concerns are maintained and securely stored.
- prevent the employment/deployment of unsuitable individuals.
- ensure robust safeguarding arrangements and procedures are in operation.

Child Safeguarding Policy

The policy and procedures will be widely promoted and are mandatory for everyone involved in **Kuk Sool Won (UK Schools)**. Failure to comply with the policy and procedures will be addressed without delay and may ultimately result in dismissal/exclusion from the organisation.

3. Legislation & statutory guidance

The following Acts and Guidance provides basis for this safeguarding policy, they can be referred to when requiring more information on safeguarding children:

- Human Rights Act 1998
- Children Act 1989
- Children Act 2004
- Working Together to Safeguard Children 2018
- Keeping Children Safe in Education 2018
- Sexual Offences Act 2003
- Data Protection Act 2018

4. Definitions

In England, Northern Ireland and Wales a child is someone under the age of 18, whether living with their families, in state care, or living independently (Working Together to Safeguard Children 2018).

This generally applies in Scotland but in some cases, for example for parts of the Scottish Child Protection Process it will be 16.

5. Types of abuse and neglect (according to Keeping Children Safe in Education 2018)

All school/club staff and volunteers should be aware that abuse, neglect and safeguarding issues are rarely standalone events that can be covered by one definition or label. In most cases, multiple issues will overlap with one another.

Abuse:

A form of maltreatment of a child. Somebody may abuse or neglect a child by inflicting harm or by failing to act to prevent harm. Children may be abused in a family or in an institutional/community setting by those known to them or, more rarely, by others. Abuse can take place wholly online, or technology may be used to facilitate offline abuse. They may be abused by an adult or adults or by another child/children.

Physical abuse:

A form of abuse which may involve hitting, shaking, throwing, poisoning, burning or scalding, drowning, suffocating or otherwise causing physical harm to a child. Physical harm may also be caused when a parent or carer fabricates the symptoms of, or deliberately induces, illness in a child.

Emotional abuse:

The persistent emotional maltreatment of a child such as to cause severe and adverse effects on the child's emotional development. It may involve conveying to a child that they are worthless or unloved, inadequate, or valued only insofar as they meet the needs of another person. It may include not giving the child opportunities to express their views, deliberately silencing them or 'making fun' of what they

Child Safeguarding Policy

say or how they communicate. It may feature age or developmentally inappropriate expectations being imposed on children. These may include interactions that are beyond a child's developmental capability as well as overprotection, limitation of exploration and learning or preventing the child from participating in normal social interaction. It may involve seeing or hearing the ill-treatment of another. It may involve serious bullying (including cyberbullying), causing children frequently to feel frightened or in danger, or the exploitation or corruption of children. Some level of emotional abuse is involved in all types of maltreatment of a child, although it may occur alone.

Sexual abuse:

Involves forcing or enticing a child or young person to take part in sexual activities, not necessarily involving a high level of violence, whether or not the child is aware of what is happening. The activities may involve physical contact, including assault by penetration (for example rape or oral sex) or non-penetrative acts such as masturbation, kissing, rubbing and touching outside of clothing. They may also include non-contact activities, such as involving children in looking at, or in the production of, sexual images, watching sexual activities, encouraging children to behave in sexually inappropriate ways, or grooming a child in preparation for abuse. Sexual abuse can take place online, and technology can be used to facilitate offline abuse. Sexual abuse is not solely perpetrated by adult males. Women can also commit acts of sexual abuse, as can other children. The sexual abuse of children by other children is a specific safeguarding issue.

Related issues

In addition to the above categories, there are other forms of harm or abuse that should involve the police and other organisations working together to protect children. These include:

- Bullying
- Child Sexual Exploitation
- Hate crimes
- Abuse in domestic settings
- Honour based violence
- Forced marriage
- Human trafficking
- Exploitation by radicalisers who promote violence
- Membership of gangs inclined to use violence.

Many of these areas are addressed in local multi-agency child or vulnerable adult safeguarding procedures. You may feel that these situations are so unlikely to arise that you would never be required to respond. However, it is as well to be aware of these other related areas, just in case your suspicions are raised.

Sometimes, your concerns may relate to poor practice, where an adult or another young person's behaviour is inappropriate and may be causing distress to a child or young person. In the application of this policy, poor practice includes any behaviour which contravenes the principles of this document or the relevant Code of Conduct or brings Martial Arts into disrepute, or which infringes an individual's rights. Where poor practice is serious or repeated this could also constitute abuse and should be reported immediately. Examples of poor practice towards students, which should never be sanctioned include:

- use of excessive, physical or humiliating punishments;
- failure to act when you witness possible abuse or bullying;
- being unaware of, or breaching, any relevant policy such as the Code of Ethics and Conduct;
- spending excessive amounts of time alone with young people away from others;
- inviting or allowing young people into your home where they will be alone with you;
- engaging in rough, physical or sexually provocative activity;
- allowing young people to use inappropriate language unchallenged;
- making sexually suggestive comments even in fun;
- reducing a person to tears as a form of control;
- allowing allegations made by a young person to go unchallenged, unrecorded or not acted upon;
- doing things of a personal nature for young people that they can do for themselves; sharing a bedroom with a young person you are not related to, even with parental permission.

Some participants may require assistance with personal care due to being very young or disabled. If a young person needs this level of support it should be made clear to their parent/s that this can only be carried out by a designated carer and not by the instructor. Even if the instructor is trained in carrying out personal care tasks, this compromises their role as trainer and places them and the child in a vulnerable position. These support arrangements should clearly be in place and agreed to by all parties prior to the activities commencing.

Positions of Trust – 2022 Update

On 28 June 2022, the law changed, Sections 16 to 19 of the Sexual Offence Act 2003 (the Act) now state that it is illegal for an adult in a position of trust to be involved in sexual activity with a person who is 16 or 17 years old and who they look after.

Child Safeguarding Policy

Although young people aged 16 and 17 have reached the age of consent for sexual activity according to UK law, they could be vulnerable to sexual abuse and exploitation in certain situations. This includes sexual activity and manipulation by adults who hold a position of trust, responsibility, or authority in relation to them, and, as a result, have a considerable amount of power and influence on their lives. The law changes have expanded to include adults in a position of trust, where an adult is coaching, teaching, training, supervising or instructing in a sport to a 16 or 17-year-old on a regular basis.

The changes

The changes to the Act include an extension of the positions of trust offences to include where an adult is coaching, teaching, training, supervising or instructing a 16 or 17-year-old in a sport on a regular basis, and where the adult knows that they are coaching, teaching, training, supervising or instructing this individual.

Within the Act, 'sport' is defined as any game in which physical skill is the predominant factor, and any form of physical recreation which is also engaged in for the purpose of competition or display. The following occupational roles will be classified as a position of trust when they are working with young people aged 16 to 17 years old:

- Personal Trainer
- Gym Instructor
- Group Exercise Instructor/Yoga/Pilates Instructor
- Coach
- Assistant Coach
- Swimming Teacher
- Assistant Swimming Teacher

The following occupational roles may also be classified as a position of trust depending upon their workplace related roles and responsibilities:

- Recreation Assistant
- Manager
- Tutor
- Assessor
- Coach Developer

Members of the workforce, employers and education partners are encouraged to understand the professional standards, workplace roles and responsibilities in relation the law changes, to ensure that they are updating their working practices, governance, education and monitoring accordingly.

Advice regarding Positions of Trust:

What can sports organisations do?

Sports organisations should clearly define within their codes of conduct that abuse of positions of trust is unacceptable behaviour, which could result in prosecution. Breaches of these codes should be robustly addressed in line with the law.

Sports codes of conduct and linked disciplinary processes should be reviews and amended to include wording that supports the maintenance of healthy and positive relationships between sports coaches and young people.

Child Safeguarding Policy

The code of conduct should reference the organisation's definition of roles that constitute positions of trust and reference the law stating that any sexual relationships/activity between adults in those roles and 16–17-year-olds for whom they are in a position of authority constitutes an offence.

The abuse of position of trust provision should be defined by the nature of the position in relation to the young person and not be dependent on the regularity of contact with the young person in question

Preventing abuse in positions of trust

Safeguarding training for those working with young person in the sport sector should include material on the issue on abuse of trust guidance on maintain appropriate boundaries between adults and young people

Safeguarding and disciplinary policies and procedures in England and Wales should include a requirement for referral to the Disclosure and Barring Service (DBS) when an individual, who is working in regulated activity, is deemed to be unsuitable to work with young people. This should be carried out even when a short-term cover/temporary member of staff is engaged.

What can sports coaches and others in positions of trust do?

As someone in a position of trust, you have a responsibility to maintain a positive, healthy relationship with the young people under your authority.

Ensure that you read, understand, sign up to and comply with the code of conduct/behaviour your club, organisation or relevant sport's governing body has produced for the role you hold.

Maintain a relationship with all participants that is appropriate to your role and reflects positively on the club or organisation you work or volunteer for. Relationships between those in positions of trust and young people in sport should be supportive, positive and aimed at improving the young person's skills, and progress.

Whether or not the code explicitly refers to positions of trust (and what would constitute breach) as someone in a position of authority you should not seek to or engage in sexual activity or sexualised communication or image sharing (including via social media) with 16- or 17-year-olds for whom you are responsible.

If you think that a young person's behaviour indicated that they are seeking to develop or engage in an inappropriate relationship with you, immediately bring this to the attention of your club or organisation's welfare officer, designated safeguarding lead or manager. Be careful not to respond to the participant in any way that could be interpreted as encouraging the young person concerned. Make a written record of your concerns and relevant details.

Taken from **June 2022**. For advice on more safeguarding topics, visit the CPSU website – the cpsu.org.uk

6. Signs and Indicators of Abuse and Neglect

Indicators that a young person may be being abused may include the following:

Child Safeguarding Policy

- unexplained or suspicious injuries such as bruising, cuts or burns, particularly if situated on a part of the body not normally prone to such injuries;
- an injury for which the explanation seems inconsistent; the young person describes what appears to be an abusive act involving him/her;
- someone else (a young person or adult) expresses concern about the welfare of another;
- unexplained changes in behaviour (e.g. becoming very quiet, withdrawn or displaying sudden outbursts of temper);
- inappropriate sexual awareness;
- engaging in sexually explicit behaviour;
- sudden or unusual distrust of adults, particularly those with whom a close relationship would normally be expected;
- having difficulty in making friends;
- being prevented from socialising with other young people;
- displaying variations in eating patterns including overeating or loss of appetite;
- or a sudden weight change;
- becoming increasingly dirty or unkempt.
-

It should be recognised that this list is not exhaustive and the presence of one or more of the indicators is not proof that abuse is taking place. A good working relationship with parent/guardians will help to identify any other concerns that a young person may be experiencing. For example, a family bereavement which could cause some of the changes listed above.

It is not the responsibility of Kuk Sool Won (UK Schools) to decide if child abuse is occurring but it is their responsibility to act on any concerns by reporting them.

7. What to do if you have a concern or someone raises concerns with you

Kuk Sool Won (UK Schools) recognises 'everyone who works with children has a responsibility for keeping them safe. No single practitioner can have a full picture of a child's needs and circumstances and, if children and families are to receive the right help at the right time, everyone who comes into contact with them has a role to play in identifying concerns, sharing information and taking prompt action' (page 11 para 16 Working Together to Safeguard Children 2018).

Whilst accepting this duty, it is recognised **Kuk Sool Won (UK Schools)** is not responsible for deciding if abuse has occurred. It does however have a duty to respond and report concerns.

Kuk Sool Won (UK Schools) will have an appropriately trained Designated Welfare Officer (DWO).

All safeguarding concerns and poor practice occurrences, except if the issue concerns those individuals, **must** be reported to the DWO / Deputy. This includes issues raised concerning the activities of instructors or volunteers or, where there are concerns outside of **Kuk Sool Won (UK Schools)** (for example at home, school or in the wider community). Where there is an allegation against an instructor or volunteer who works with children at **Kuk Sool Won (UK Schools)** the DWO/ Deputy must report the matter to the Local Authority Designated Officer.

Child Safeguarding Policy

Instructors and volunteers must also report the following to the DSL / Deputy and make a written record of what they have done, seen or heard:

- They have accidentally hurt a child;
- A child seems distressed in any manner;
- a child appears to be sexually aroused by their actions;
- a child misunderstands or misinterprets something they have said or done.

If you think a child is in immediate danger or requires medical attention, you should call the emergency services on 999. You can also ring the NSPCC helpline on 0808 800 5000 to report immediate risks. This is an immediate responsibility and will take priority over informing the Designated Safeguard Lead or Deputy.

8. How to respond to a concern

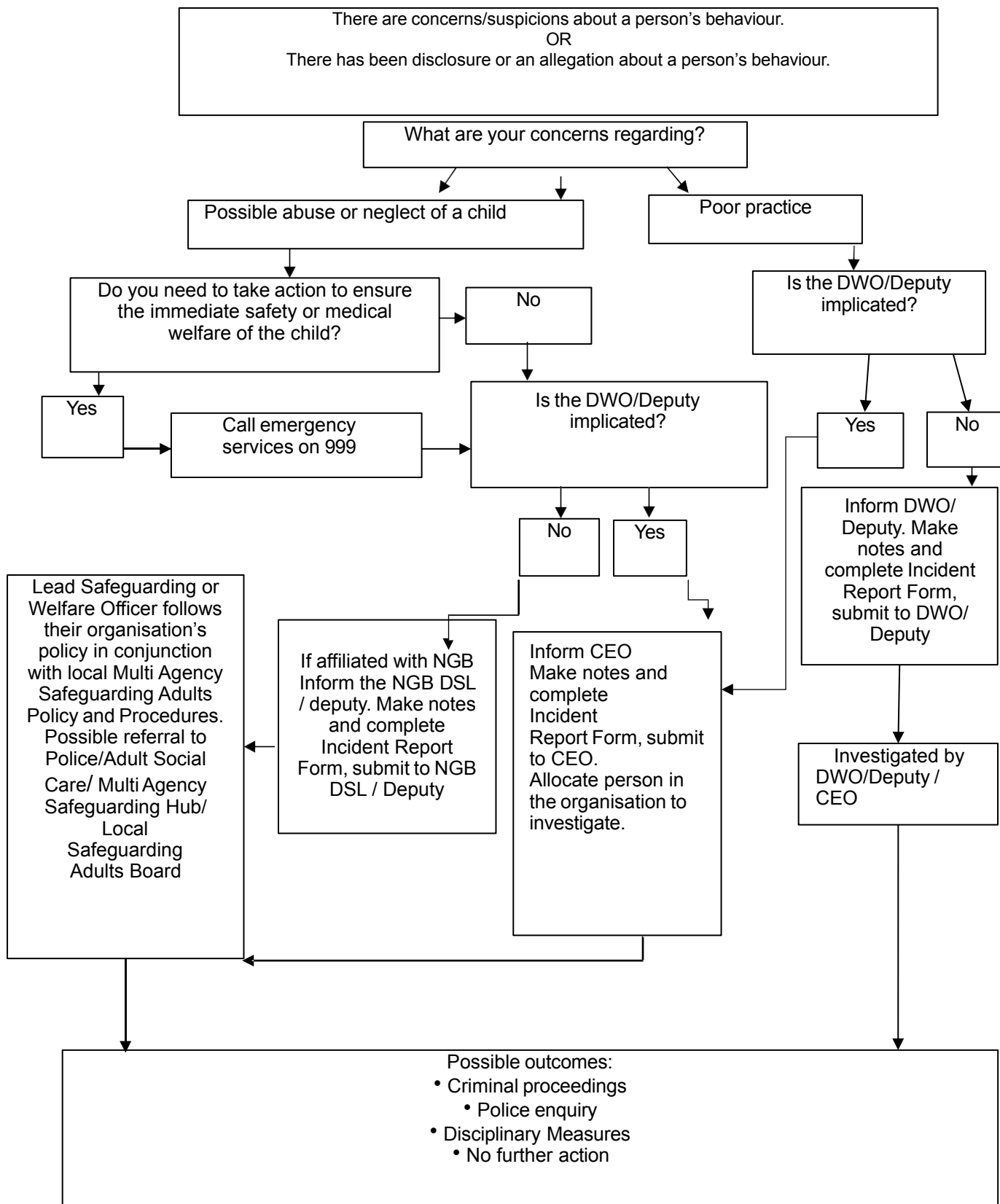
It is always difficult to hear about or witness harm or abuse experienced by a child or young person. The following points will be helpful for both you and the child should they choose to disclose abuse to you:

- Stay calm.
- Listen carefully to what is said and try not to interrupt.
- Find an appropriate point early on to explain that it is likely that the information will need to be shared with others – do not promise to keep secrets.
- Allow them to continue at their own pace.
- Ask questions for clarification only, and avoid asking questions that suggest an answer (leading questions).
- Reassure them that they are not to blame and have done the right thing in telling you. If the concern is serious explain that you will need to get support from other trained people to help keep the child safe. This must be shared even if the child doesn't want you to tell anyone else.
- Tell them what you will do next and with whom the information will be shared. If they are adamant that they do not wish the information to be shared, explain that you will have to tell your Designated Safeguarding Lead and that it will be discussed further with them.
- Be aware of the possibility of forensic evidence if the disclosure relates to a recent incident of physical harm or injury and try to protect any supporting materials e.g. bedding or clothing.
- Contact your Designated Safeguarding Lead.
- Where you are unable to contact your Designated Person, advice can be sought from statutory agencies or the NSPCC Helpline.
- All serious concerns must be referred to statutory agencies.
- Where the concern or allegation is about a member of staff or a volunteer, this must like all other concerns be reported to the Designated Safeguarding Lead (DSL) or Deputy. The DSL if they consider the concern to be serious, for example potentially child abuse or a crime they must report the incident to the Local Authority Designated Officer or the Police.

Child Safeguarding Policy

When a safeguarding concern or poor practice has been identified concerning a specific child the parents/guardians/carers of that child should be notified. Where the DSL/Deputy has reported the incident to the statutory authorities, advice should be sought from them regarding this duty before notifying the parents/guardians/carers.

9. Safeguarding Children Flowchart



Should a child make a disclosure a record in writing must be made as soon as possible, using their words as closely as possible and where relevant, using the school/club report form. Note the date, time, any names mentioned, names and addresses to whom the information was given and who else is aware of the allegation. Note or describe clearly any visible injury.

Take care to distinguish between fact, observation, allegation and opinion. It is important that the information you have is accurate.

Recording of any incident, including possible abuse or poor practice incidents, should also follow this procedure. In all situations, including those in which the cause of concern arises either from a disclosure of abuse or from suspicion of abuse, it is vitally important to record the details, regardless of whether they are shared with a statutory agency, as soon as possible using the incident reporting form for children.

The record should be clear and factual as it may be needed by child protection agencies and may, in the future, be used as evidence in court. Records should be kept securely and shared only with those who need to know about the incident.

Throughout the process of any safeguarding cases, accurate records should be made and maintained.

11. Codes of Conduct and Ethics

The codes of conduct and ethics for all those involved at **Kuk Sool Won™ UK Schools** can be found as a separate guidance sheet. It is essential these are followed in so the highest possible standards of behaviour and conduct in Martial Arts activities are maintained. The principles must be adhered to at all times so that Martial Arts can be enjoyed by all. All those involved at **Kuk Sool Won™ UK Schools** will show their understanding and commitment to the codes of conduct and ethics by signing a copy of the relevant guidance sheet.

12. Safer Recruiting

At **Kuk Sool Won™ UK Schools** we take all reasonable steps to ensure unsuitable people are prevented from working with children. Whilst there may be some reservations that volunteers could be put off by having to go through a recruitment process, it is important to ensure reasonable steps have been taken to identify unsuitable individuals. A guidance sheet can be found which outlines safer recruiting in further detail.

Child Safeguarding Policy

All insured school owners and instructors are requested to complete a 'Consent to View and Check Enhanced DBS Certificates and Updates' form and make their enhanced DBS certificates available to the Kuk Sool Won™ UK Schools Safeguarding Team for review. Certificates can be viewed either in hard copy or electronically. This is on the understanding that the hardcopy will be returned, or that the electronic copy will be deleted once viewed.

13. Supervision, support and training

Once recruited, all staff and volunteers at **Kuk Sool Won™ UK Schools** will be well informed, trained, supervised and supported to ensure that they effectively safeguard children and know how to respond to any concerns.

Kuk Sool Won™ UK School will ensure that training and resources are available to encourage the development of staff and volunteers. This will include:

- an induction to the work and the school/club
- a trial period in which to develop skills whilst supervised
- ongoing support and monitoring.

There are currently no formal qualifications specifically for safeguarding and protecting children in sport. However, training developed by sports and other organisations is available to strengthen the skills and knowledge of the sporting children's workforce to safeguard children and young people. Training plays an important role in equipping staff and volunteers to do their job safely and effectively. Different safeguarding training is available depending on the person's role.

14. Whistleblowing

It's important that people within **Kuk Sool Won™ UK Schools** have the confidence to come forward to speak or act if they're unhappy with anything.

Whistleblowing occurs when a person raises a concern about dangerous or illegal activity, or any wrongdoing within their sports organisation. The NSPCC has a **whistleblowing** advice line to support professionals who have concerns about how child protection issues are being handled in their own or another organisation.

More detail can be found on the Whistleblowing Policy.

15. Complaints

In order to ensure we develop an open culture where children and staff feel able to express any concerns, we have a procedure for dealing with complaints from a child, worker, volunteer, parent or carer.

This should be linked to the organisation's complaints procedures, ensuring the provision of support and advocacy for the people involved.

16. Links to other organisational procedures

- Adults Safeguarding Policy
- Social Media Policy
- Whistleblowing Policy

Child Safeguarding Policy

- Safer Recruitment Policy
- Complaints Procedure
- Disclosure and Barring Guidance
- Role of Designated Welfare Officer
- Codes of Conduct for Parents and Carers, Staff and Volunteers and Children and Young People

17. Useful contacts

Designated Safeguarding Lead (DSL)

- Name: Karl Martindale
- Email: karl@kuksoolwonwidnes.co.uk
- Telephone: 07957222443

Local Authority Designated Officer (LADO)

- Name: Halton Borough Council LADO
- Email: LADO@halton.gov.uk
- Telephone: 0151 511 7925

Police contact

- Name: Cheshire Police LADO
- Email: safeguardinglado@cheshirewestandchester.gov.uk
- Referral Form: <https://www.cheshirewestscp.co.uk/wp-content/uploads/2023/12/Allegations-Referral-Form-LADO-updated-Dec-23.doc>

Ann Craft Trust - Safeguarding Adults in Sport and Activity:

Website: www.anncrafttrust.org

Email: Ann-Craft-Trust@nottingham.ac.uk Telephone:

0115 951 5400

In addition to the above local area contacts, the WKSA UK schools also have their own dedicated Safeguarding team:

MEET THE WKSA UK SAFEGUARDING TEAM



JIKJN IAN CAMERON
EMAIL:
KJNCAM53@GMAIL.COM
MOB: 07749211907



PKJN SANDY WATT
EMAIL:
SANDYWATT@SANDYWATT.PLUS.COM
MOB: 07840898673



PKJN ORVILLE LEWIS
EMAIL:
ORVILLELEWIS@HOTMAIL.CO.UK
MOB: 07761560121



PSBN NICHOLA STEEDMAN
EMAIL:
WINCHBURGHKSW@OUTLOOK.COM
MOB: 07833696116



PKJN RYSIAN BOYALL
EMAIL:
RYSIANB.3193@GMAIL.COM
MOB: 07507310081



PSBN SALLY RUNNACLES
EMAIL:
KSW.YEOVIL@BTINTERNET.COM
MOB: 07795117701

PLEASE FEEL FREE TO CONTACT ONE OF US IF YOU ARE FEELING WORRIED,
UNHAPPY, UNSAFE OR CONCERNED ABOUT OTHERS

